

Donaldson®  
Torit®

## FT PULSE JET BAGHOUSE DUST COLLECTORS

MODELS FTD (Without Walk-In Plenum)  
and FTP (Walk-In Plenum)



**144FTD6**

Without Walk-In Plenum

**DURA-LIFE™**  
Twice The Life Filter Bags



**144FTP8**

Walk-In Plenum

Easy and dependable operation for high-volume dust collection applications.

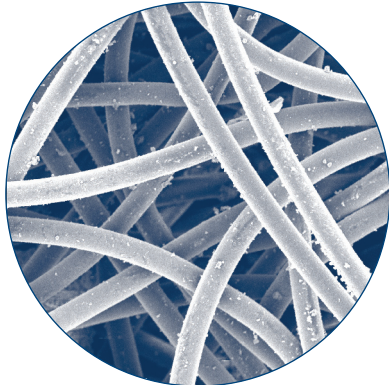
- Clean side bag removal provides easier bag filter service.
- Optional walk-in plenum allows for bag filter servicing in adverse weather conditions (FTP).
- All welded construction provides increased durability and air/water integrity.
- Integral fan option up to 75 hp helps to reduce space requirements.
- Unique cleaning system minimizes moisture and particulate issues in pulse valves.
- Collectors with up to 225 bag filters require only one dirty air inlet, one clean air outlet, and one hopper, resulting in reduced ducting and hopper outlet costs.

# FT PULSE JET BAGHOUSE DUST COLLECTORS

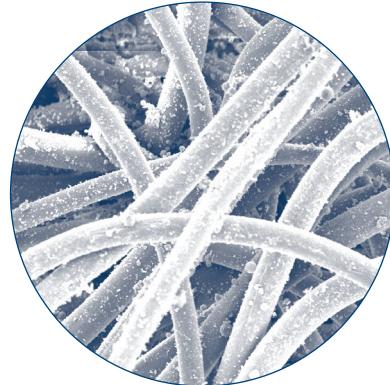
## DURA-LIFE™ BAG FILTERS — A BREAKTHROUGH FOR BAG USERS.

Dura-Life polyester bag filter media is engineered with a unique hydroentanglement process that uses water to blend the fibers, which creates a bag filter that has smaller pores, better surface loading and better cleaning. For this reason, Dura-Life bag filters provide:

- Two to three times longer bag filter life
- Reduced maintenance and replacement bag filter costs due to fewer bag changeouts
- Fan energy savings due to lower pressure drop
- Thirty percent fewer emissions based on EPA tests



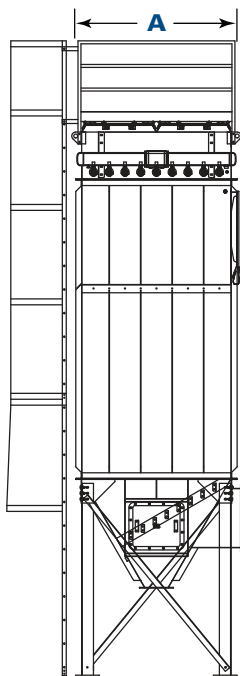
**Dura-Life Bag-Clean Air Side**  
(300x)



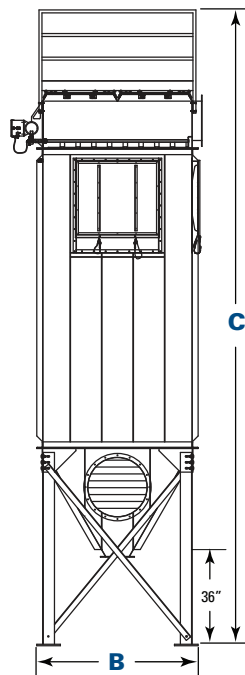
**Polyester Bag-Clean Air Side**  
(300x)

These photos were taken with a scanning electron microscope of bag media used in a collector that was filtering fly ash. The bags were removed after 2,700 hours of use. Air-to-media ratio was 4.5 to 1. Pressure drop after 2,700 hours of operation was 6 in. on polyester bags and 2 in. on Dura-Life.

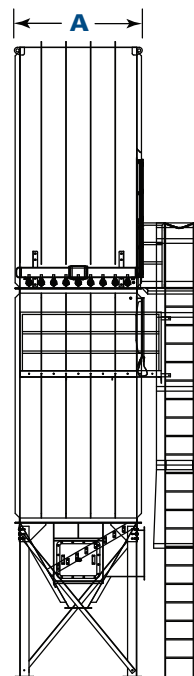
## DIMENSIONS & SPECIFICATIONS



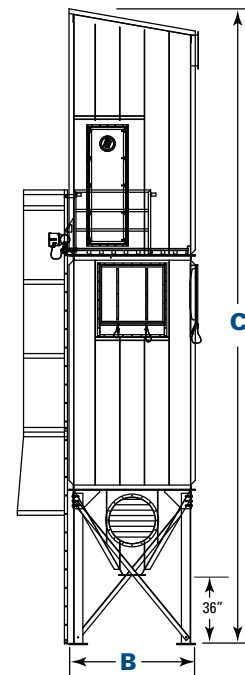
**Front View**  
81FTD8



**Side View**  
81FTD8



**Front View**  
81FTP8  
w/Walk-In Plenum



**Side View**  
81FTP8  
w/Walk-In Plenum

# FT PULSE JET BAGHOUSE DUST COLLECTORS

## DIMENSIONS & SPECIFICATIONS

Model	Nominal Airflow Range* (cfm)	Cloth Area (ft <sup>2</sup> )	Length of Bag Filters (ft)	FTD Shipping Weight (lbs)	FTP Shipping Weight (lbs)	FTD Dimensions (inches)			FTP Dimensions (inches)		
						A	B	C	A	B	C
9FT4	240 - 600	60	4	1,300	—	30	30	163	—	—	—
9FT6	360 - 900	90	6	1,400	—	30	30	187	—	—	—
9FT8	480 - 1,200	120	8	1,500	—	30	30	211	—	—	—
16FT4	428 - 1,070	107	4	1,600	—	38	38	170	—	—	—
16FT6	640 - 1,600	160	6	1,800	—	38	38	194	—	—	—
16FT8	852 - 2,130	213	8	1,900	—	38	38	218	—	—	—
25FT4	688 - 1,670	167	4	1,900	—	46	46	177	—	—	—
25FT6	1,000 - 2,500	250	6	2,100	—	46	46	201	—	—	—
25FT8	1,322 - 3,330	333	8	2,300	—	46	46	225	—	—	—
36FT4	960 - 2,400	240	4	2,200	—	54	54	184	—	—	—
36FT6	1,440 - 3,600	360	6	2,400	—	54	54	208	—	—	—
36FT8	1,920 - 4,800	480	8	2,700	—	54	54	232	—	—	—
49FT4	1,308 - 3,270	327	4	2,600	—	62	62	191	—	—	—
49FT6	1,960 - 4,900	490	6	2,900	—	62	62	215	—	—	—
49FT8	2,612 - 6,530	653	8	3,200	—	62	62	239	—	—	—
64FT6	2,560 - 6,400	640	6	3,400	—	70	70	222	—	—	—
64FT8	3,412 - 8,530	853	8	3,800	—	70	70	246	—	—	—
64FT10	4,264 - 10,660	1066	10	4,100	—	70	70	271	—	—	—
81FT8	4,320 - 10,800	1080	8	5,750	6,750	82	82	265	82	82	304.1
81FT10	5,400 - 13,500	1350	10	6,250	7,500	82	82	289	82	82	352.1
81FT12	6,480 - 16,200	1620	12	6,750	8,250	82	82	313	82	82	400.1
100FT8	5,332 - 13,330	1333	8	6,500	7,500	90	90	272	90	90	317.5
100FT10	6,668 - 16,670	1667	10	7,000	8,500	90	90	296	90	90	365.5
100FT12	8,000 - 20,000	2000	12	7,500	9,250	90	90	320	90	90	413.5
121FT8	6,452 - 16,130	1613	8	7,500	8,750	98	98	280	98	98	324.6
121FT10	8,068 - 20,170	2017	10	8,250	9,750	98	98	304	98	98	372.6
121FT12	9,680 - 24,200	2420	12	8,750	10,750	98	98	328	98	98	420.6
144FT8	7,680 - 19,200	1920	8	8,250	9,750	106	106	287	106	106	329.6
144FT10	9,600 - 24,000	2400	10	9,000	11,000	106	106	311	106	106	377.6
144FT12	11,520 - 28,800	2880	12	9,750	12,000	106	106	335	106	106	425.6
169FT8	9,012 - 22,530	2253	8	9,250	10,750	114	114	294	114	114	342.9
169FT10	11,268 - 28,170	2817	10	10,000	12,000	114	114	318	114	114	390.9
169FT12	13,520 - 33,800	3380	12	11,000	13,500	114	114	342	114	114	438.9
196FT8	10,452 - 26,130	2613	8	10,250	11,750	122	122	301	122	122	349.8
196FT10	13,068 - 32,670	3267	10	11,000	13,250	122	122	325	122	122	397.8
196FT12	15,680 - 39,200	3920	12	12,000	10,000	122	122	349	122	122	445.8
225FT8	12,000 - 30,000	3000	8	11,250	13,500	130	130	308	130	130	358.2
225FT10	15,000 - 37,500	3750	10	12,250	15,000	130	130	332	130	130	406.2
225FT12	18,000 - 45,000	4500	12	13,250	16,500	130	130	356	130	130	454.2
252FT8	13,440 - 33,600	3360	8	15,000	17,500	122	168	311.3	122	168	361.1
252FT10	16,800 - 42,000	4200	10	16,000	19,000	122	168	335.3	122	168	409.1
252FT12	20,160 - 50,400	5040	12	17,000	20,500	122	168	359.3	122	168	457.1
336FT8	17,920 - 44,800	4480	8	18,200	21,200	122	224	311.3	122	224	361.1
336FT10	22,400 - 56,000	5600	10	19,700	23,200	122	224	335.3	122	224	409.1
336FT12	26,880 - 67,200	6720	12	21,200	25,200	122	224	359.3	122	224	457.1

\* Based on clean bag filters.

# FT PULSE JET BAGHOUSE DUST COLLECTORS

## STANDARD FEATURES & AVAILABLE OPTIONS

Collector Design	Std	Opt	Hopper Design	Std	Opt
Clean-Side Bag Removal	X		60° Pyramid Hopper	X	
All-Welded, Carbon Steel Construction, 12 Gauge	X		Flanged Dirty Air Inlet	X	
Heavy-Duty 3/16-in Plate Tubesheet	X		Inlet Deflector	X	
Rated 17-inch Water Gauge	X		Flanged Hopper Discharge	X	
Compressed Air Manifold with Drain	X		Hopper Access Panel	X	
Flanged Clean Air Outlet	X		Coupling for High Level Indicator	X	
High Performance Venturis	X		High Level Indicator		X
Easy-Lift Lifting Ears	X		<b>Hopper Discharge</b>		
Walk-In Clean Air Plenum with 10° Sloped Roof (FTP)	X		Dumpster Discharge with Pneumatic Lid and Controls		X
Service Railing on Top of Collector (FTD)	X		Rack and Pinion Gate		X
Integrated Exhaust Weatherhood		X	55-Gallon Drum Cover		X
Stainless Steel Construction		X	Various Rotary Valve Options		X
Mountable Direct Drive Fans with Outlet Hood and Birdscreen with NEMA Premium®* Efficient Motor		X	<b>Support Structure</b>		
High Performance Fan Silencer		X	36" Clearance Leg Pack	X	
Slide Gate Fan Damper		X	Custom Clearance Leg Packs		X
<b>Bags &amp; Cages</b>			<b>Electrical Controls, Gauges &amp; Enclosures</b>		
Dura-Life Twice the Life Polyester Snap-In Bag Filters	X		Goyen Diaphragm Valves	X	
Galvanized Cages	X		120V Timerboard and Solenoid Valves in NEMA 4 Enclosure	X	
Variety of Bag Media Options		X	Magnehelic*** Gauge	X	
<b>Paint System</b>			Photohelic®** Gauge		X
Prime Coated Interior	X		Photohelic® Gauge (Weatherproof)		X
Liquid Alkyd Finish Exterior	X		Delta P Control Panel without Timer		X
Standard Colors: Torit Blue or Storm White	X		<b>SAFETY FEATURES</b>		
Special Colors		X	4x4 Bag Safety Grid (bin vent units only)	X	
			Sprinkler Access Ports		X
			Sprinkler Pack Assembly		X
			Explosion Vents		X
			<b>Warranty</b>		
			10-Year Warranty	X	

\* All 60 Hz motors 1 HP and above are EISA compliant and considered NEMA Premium® per Table 12-12. NEMA Premium is a registered trademark of National Electrical Manufacturers Association.

\*\* Magnehelic and Photohelic are registered trademarks of Dwyer Instruments, Inc.

Significantly improve the performance of your collector with genuine Donaldson Torit replacement filters and parts. [Browse our catalog at donaldson.com](https://www.donaldson.com)



Donaldson Company, Inc.  
Torit  
P.O. Box 1299  
Minneapolis, MN  
55440-1299 U.S.A.

Tel 800-365-1331 (USA)  
Tel 800-343-3639 (within Mexico)

donaldson.com  
donaldson.com



Data Sheet FT Pulse Jet Baghouse (08/11)

© 2008 Donaldson Co., Inc. All Rights Reserved. Information in the document is subject to change without notice. Donaldson Torit is a registered trademark of Donaldson Company, Inc. Contains Donaldson proprietary technology.