



**121FS10
Pulse Jet Baghouse Dust Collector**

with integrated fan, silencer
and dumpster discharge

DURA-LIFE™
Twice The Life Filter Bags



25FS8 Bin Vent

with integrated fan

Economical solutions for dust collection and bin venting applications.

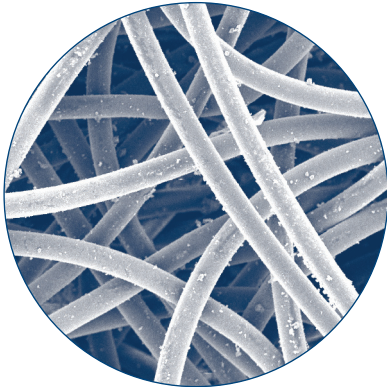
- Side bag filter removal allows for installation in low headroom applications.
- All-welded construction provides increased durability and air/water integrity.
- Integral fan option up to 75 hp helps to reduce space requirements.
- Unique cleaning system minimizes moisture and particulate issues in pulse valves.
- Collectors with up to 225 bag filters require only one dirty air inlet, one clean air outlet, and one hopper, resulting in reduced ducting and hopper outlet costs.

FS PULSE JET BAGHOUSE DUST COLLECTORS AND BIN VENTS

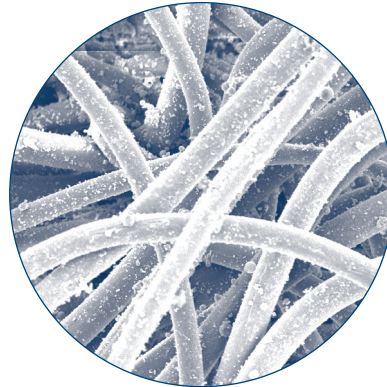
DURA-LIFE™ BAG FILTERS — A BREAKTHROUGH FOR BAG USERS.

Dura-Life™ * polyester bag filter media is engineered with a unique hydroentanglement process that uses water to blend the fibers, which creates a filter bag that has smaller pores, better surface loading and better cleaning. For this reason, Dura-Life bag filters provide:

- Two to three times longer bag filter life
- Reduced maintenance and replacement bag filter costs due to fewer bag changeouts
- Fan energy savings due to lower pressure drop
- Thirty percent fewer emissions based on EPA tests



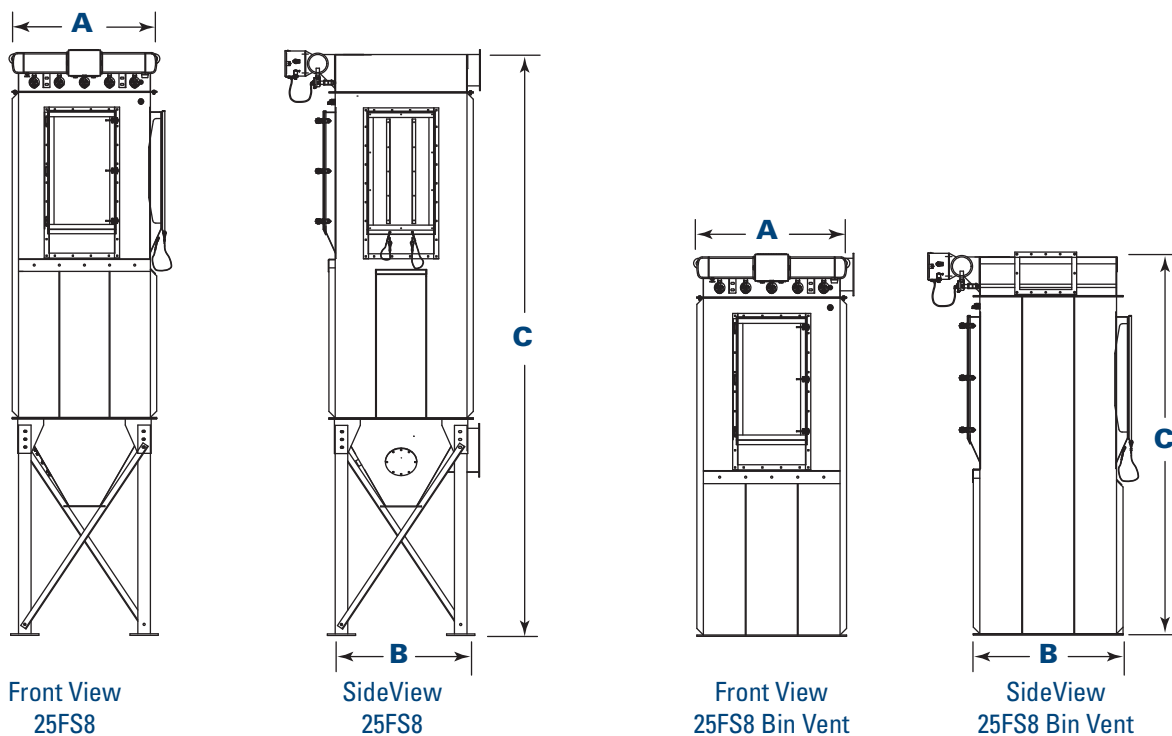
Dura-Life Bag-Clean Air Side
(300x)



Polyester Bag-Clean Air Side
(300x)

These photos were taken with a scanning electron microscope of bag media used in a collector that was filtering fly ash. The bags were removed after 2,700 hours of use. Air-to-media ratio was 4.5 to 1. Pressure drop after 2,700 hours of operation was 6 in. on polyester bags and 2 in. on Dura-Life.

DIMENSIONS & SPECIFICATIONS



FS PULSE JET BAGHOUSE DUST COLLECTORS AND BIN VENTS

DIMENSIONS & SPECIFICATIONS

Model	Nominal Airflow Range* (cfm)	Cloth Area (ft ²)	Length of Filter Bags (ft)	Shipping Weight (lbs)	Dimensions (inches)		
					A	B	C
9FS4	240 - 600	60	4	1,200	30	30	119.6
9FS6	360 - 900	90	6	1,300	30	30	143.6
9FS8	480 - 1,200	120	8	1,400	30	30	167.6
16FS4	428 - 1,070	107	4	1,500	38	38	126.9
16FS6	640 - 1,600	160	6	1,600	38	38	150.9
16FS8	852 - 2,130	213	8	1,800	38	38	174.9
25FS4	688 - 1,670	167	4	1,800	46	46	133.6
25FS6	1,000 - 2,500	250	6	2,000	46	46	157.6
25FS8	1,322 - 3,330	333	8	2,200	46	46	181.6
36FS4	960 - 2,400	240	4	2,100	54	54	140.7
36FS6	1,440 - 3,600	360	6	2,300	54	54	164.7
36FS8	1,920 - 4,800	480	8	2,600	54	54	188.7
49FS4	1,308 - 3,270	327	4	2,500	62	62	148.2
49FS6	1,960 - 4,900	490	6	2,800	62	62	172.2
49FS8	2,612 - 6,530	653	8	3,100	62	62	196.2
64FS6	2,560 - 6,400	640	6	3,200	70	70	179.1
64FS8	3,412 - 8,530	853	8	3,600	70	70	203.1
64FS10	4,264 - 10,660	1066	10	4,000	70	70	227.1
81FS8	4,320 - 10,800	1080	8	5,500	82	82	221.8
81FS10	5,400 - 13,500	1350	10	6,000	82	82	245.8
81FS12	6,480 - 16,200	1620	12	6,500	82	82	269.8
100FS8	5,332 - 13,330	1333	8	6,250	90	90	228.8
100FS10	6,668 - 16,670	1667	10	6,750	90	90	252.8
100FS12	8,000 - 20,000	2000	12	7,250	90	90	276.8
121FS8	6,452 - 16,130	1613	8	7,250	98	98	236.9
121FS10	8,068 - 20,170	2017	10	8,000	98	98	260.9
121FS12	9,680 - 24,200	2420	12	8,500	98	98	284.9
144FS8	7,680 - 19,200	1920	8	8,250	106	106	243.8
144FS10	9,600 - 24,000	2400	10	8,750	106	106	267.8
144FS12	11,520 - 28,800	2880	12	9,500	106	106	291.8
169FS8	9,012 - 22,530	2253	8	9,000	114	114	250.8
169FS10	11,268 - 28,170	2817	10	10,000	114	114	274.8
169FS12	13,520 - 33,800	3380	12	10,750	114	114	298.8
196FS8	10,452 - 26,130	2613	8	10,000	122	122	257.7
196FS10	13,068 - 32,670	3267	10	10,750	122	122	281.7
196FS12	15,680 - 39,200	3920	12	11,750	122	122	305.7
225FS8	12,000 - 30,000	3000	8	11,000	130	130	264.6
225FS10	15,000 - 37,500	3750	10	12,000	130	130	288.6
225FS12	18,000 - 45,000	4500	12	13,000	130	130	312.6
252FS8	13,440 - 33,600	3360	8	N/A**	168	122	286.0
252FS10	16,800 - 42,000	4200	10	N/A**	168	122	310.0
252FS12	20,160 - 50,400	5040	12	N/A**	168	122	334.0
336FS8	17,920 - 44,800	4480	8	N/A**	224	122	286.0
336FS10	22,400 - 56,000	5600	10	N/A**	224	122	310.0
336FS12	26,880 - 67,200	6720	12	N/A**	224	122	334.0
Bin Vent Model							
9FS4	180 - 420	60	4	500	30	30	69.6
9FS6	270 - 630	90	6	600	30	30	93.6
9FS8	360 - 840	120	8	800	30	30	117.6
16FS4	321 - 749	107	4	700	38	38	69.6
16FS6	480 - 1,120	160	6	900	38	38	93.6
16FS8	639 - 1,491	213	8	1,100	38	38	117.6
25FS4	501 - 1,169	167	4	1,000	46	46	69.6
25FS6	750 - 1,750	250	6	1,200	46	46	93.6
25FS8	999 - 2,331	333	8	1,400	46	46	117.6
36FS4	720 - 1,680	240	4	1,200	54	54	69.6
36FS6	1,080 - 2,520	360	6	1,400	54	54	93.6
36FS8	1,440 - 3,360	480	8	1,700	54	54	117.6
49FS4	981 - 2,289	327	4	1,500	62	62	70.1
49FS6	1,470 - 3,430	490	6	1,800	62	62	94.1
49FS8	1,959 - 4,571	653	8	2,100	62	62	118.1
64FS6	1,920 - 4,480	640	6	2,100	70	70	94.1
64FS8	2,559 - 5,971	853	8	2,500	70	70	118.1
64FS10	3,198 - 7,462	1066	10	2,800	70	70	142.1

* Based on clean bag filters.

** Contact home office.

FS PULSE JET BAGHOUSE DUST COLLECTORS AND BIN VENTS

STANDARD FEATURES & EQUIPMENT OPTIONS

Collector Design	Std	Opt	Hopper Design (Not available on Bin Vent)	Std	Opt
Side Bag Removal	X		60° Hoppers	X	
All-Welded, Carbon Steel Construction, 12 Gauge	X		Flanged Dirty Air Inlet	X	
Rated 17-inch Water Gauge	X		Inlet Deflector	X	
Compressed Air Manifold with Drain	X		Flanged Hopper Discharge	X	
Flanged Clean Air Outlet	X		Hopper Access Panel	X	
High Performance Venturis	X		Coupling for High Level Indicator	X	
Easy-Lift Lifting Ears	X		High Level Indicator		X
Integrated Exhaust Weatherhood		X	Hopper Discharge (Not available on Bin Vent)		
Service Platform and Ladder		X	Dumpster Discharge with Pneumatic Lid and Controls		X
Stainless Steel Construction		X	Rack and Pinion Gate		X
Factory Mounted Direct Drive Fans with Outlet Hood and Birdscreen with NEMA Premium®* Efficient Motor		X	55-Gallon Drum Cover		X
High Performance Fan Silencer		X	Various Rotary Valve Options		X
Slide Gate Fan Damper		X	Support Structure (Not available on Bin Vent)		
Shaving Control System (SCS)			36" Clearance Leg Pack	X	
Bags & Cages			Custom Clearance Leg Packs		X
Dura-Life Twice the Life Polyester Bags	X		Electrical Controls, Gauges & Enclosures		
Stainless Steel Bag Clamps	X		Goyen Diaphragm Valves	X	
Galvanized Cages	X		120V Timerboard and Solenoid Valves in NEMA 4 Enclosure		X
Variety of Bag Media Options		X	Magnehelic®** Gauge	X	
Paint System			Photohelic®** Gauge		X
Prime Coated Interior	X		Photohelic Gauge (Weatherproof)		X
Liquid Alkyd Finish Exterior	X		Delta P Control Panel without Timer		X
Standard Colors: Torit Blue or Storm White	X		Safety Features		
Custom Colors		X	4x4 Bag Safety Grid (bin vent units only)	X	
			Sprinkler Access Ports		X
			Sprinkler Pack Assembly		X
			Explosion Vents		X
			Warranty		
			10-Year Warranty	X	

* All 60 Hz motors 1 HP and above are EISA compliant and considered NEMA Premium® per Table 12-12. NEMA Premium is a registered trademark of National Electrical Manufacturers Association.

** Magnehelic and Photohelic are registered trademarks of Dwyer Instruments, Inc.

Significantly improve the performance of your collector with genuine Donaldson Torit replacement filters and parts. [Browse our catalog at donaldson.com](https://www.donaldson.com)



Donaldson Company, Inc.
Torit
P.O. Box 1299
Minneapolis, MN
55440-1299 U.S.A.

Tel 800-365-1331 (USA)
Tel 800-343-3639 (within Mexico)

donaldson.com
donaldson.com



Data Sheet FS Pulse Jet Baghouse & Bin Vent (08/11)

© 2008 Donaldson Co., Inc. All Rights Reserved. Information in the document is subject to change without notice. Donaldson Torit is a registered trademark of Donaldson Company, Inc. Contains Donaldson proprietary technology.