

Compact, direct machine-mountable mist collectors designed to collect, filter, and reclaim mist generated from machines using oil-based, synthetic, semi-synthetic, or water-soluble coolants.

- Efficient, compact design handles mist and smoke applications from 100-1000 cfm.
- Three stages of filtration for high filtration efficiency and optimum filter life.
- Available with high performance in-cover or in-line prefilters for removal of swarf and large chips and in-cover impingers for applications with heavy concentrations of fine mist.
- High collection efficiency of 98% on 1.0 μm increasing to 99.97% at 0.3 μm with optional fourth stage HEPA filter.
- Direct-mount capability minimizes ductwork.
- Recirculation of clean air eliminates the need for costly make-up air.
- Provides a cleaner work environment for maximum productivity.
- Helps support OSHA Clean Air Standards.



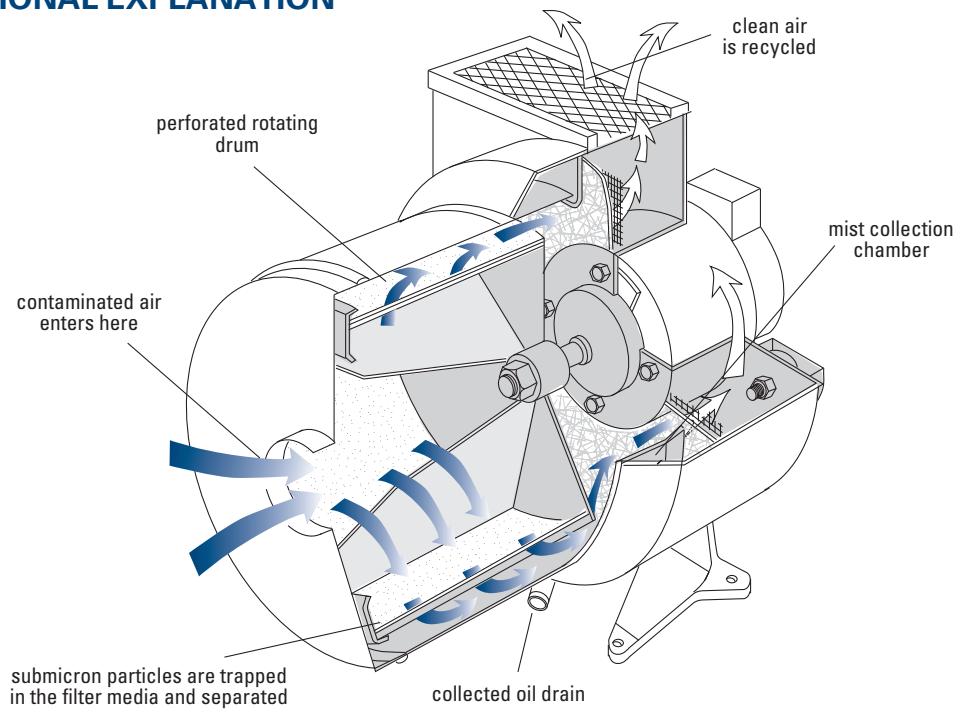
E-500



E-300 with HEPA

CENTRIFUGAL MIST COLLECTORS

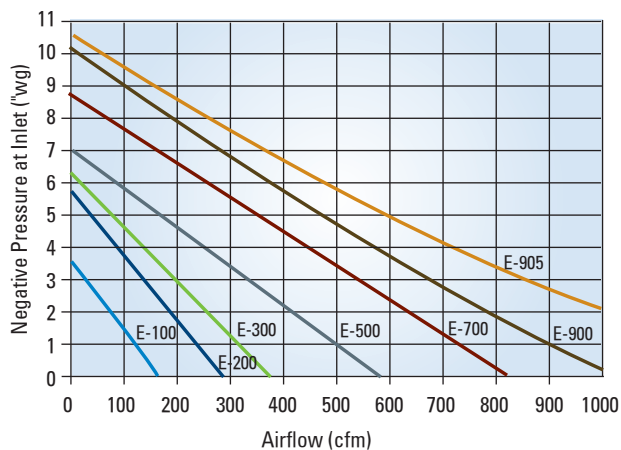
OPERATIONAL EXPLANATION



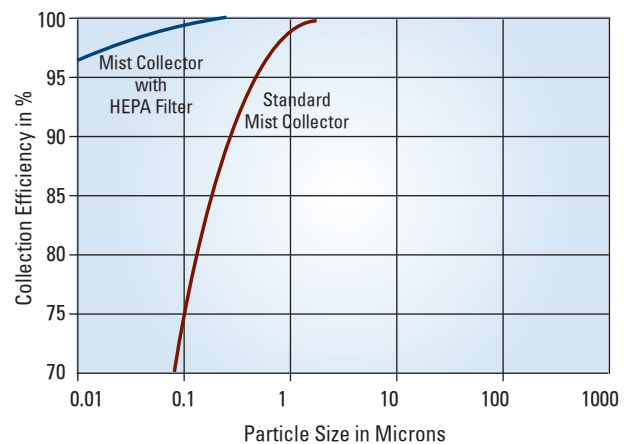
- Inexpensive, throwaway filter liners reduce maintenance costs.
- Sturdy, compact, 16-gauge steel encasement is tough and solid for harsh industrial environments.
- Optional HEPA and carbon filters are available on all models.

PERFORMANCE SELECTIONS

Airflow at 60 Hz - 3450 RPM

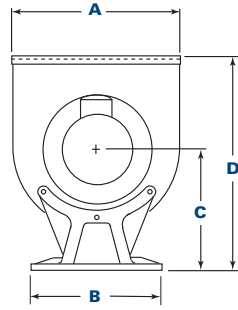


Particle Size vs. Collection Efficiency

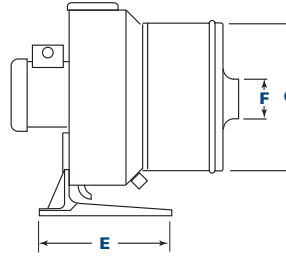


CENTRIFUGAL MIST COLLECTORS

DIMENSIONS & SPECIFICATIONS



Front View



Side View

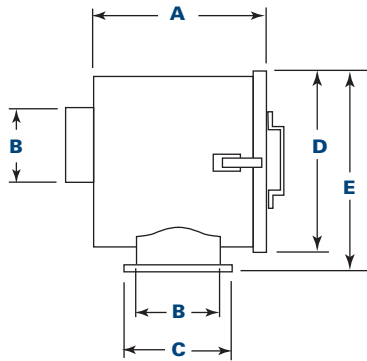
Model	Nominal Airflow* (cfm @1" TSP)	Motor (hp)	Dimensions*** (inches)							Sound Level dB(A)†	Shipping Weight (lbs)
			A	B	C	D	E	F	G		
E-100	100	0.5	14.9	11.5	11.5	19.4	11.5	3.9	14.5	70	125
E-200	200	0.5	14.9	11.5	11.5	19.4	11.5	3.9	14.5	70	125
E-300	300	1	17.1	11.5	12.3	21.4	11.5	3.9	14.5	72	145
E-500	500	1	17.1	11.5	12.3	21.4	11.5	5.9	14.5	72	145
EA-700	700	3	20.8	11.5	12.3	23.2	11.5	5.9	18.3	74	190
EA-900	900	3	20.8	11.5	12.3	23.2	11.5	5.9	18.3	74	190
EA-905	1000**	3	20.8	11.5	12.3	23.2	11.5	5.9	18.3	76	190

* Based on clean filters

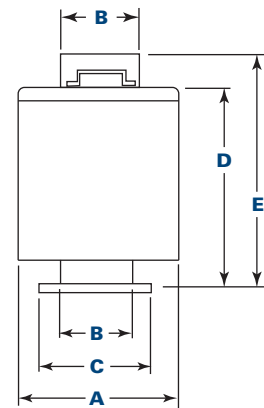
** 1,000 cfm @ 2" External Static Pressure (ESP).

*** Dimensions do not include HEPA option.

† The actual measured sound level will vary, depending on background noise and room conditions.



Horizontal Prefilter Trap



Vertical Prefilter Trap

Model	Dimensions (inches) Horizontal				
	A	B	C	D	E
E-100	9.1	3.9	6.0	9.1	10.0
E-200	9.1	3.9	6.0	9.1	10.0
E-300	9.1	3.9	6.0	9.1	10.0
E-500	12.1	5.9	8.0	12.1	13.0
EA-700	12.1	5.9	8.0	12.1	13.0
EA-900	12.1	5.9	8.0	12.1	13.0
EA-905	12.1	5.9	8.0	12.1	13.0

Model	Dimensions (inches) Vertical				
	A	B	C	D	E
E-100	9.1	3.9	6.0	10.8	11.8
E-200	9.1	3.9	6.0	10.8	11.8
E-300	9.1	3.9	6.0	10.8	11.8
E-500	12.3	5.9	8.0	14.1	15.5
EA-700	12.3	5.9	8.0	14.1	15.5
EA-900	12.3	5.9	8.0	14.1	15.5
EA-905	12.3	5.9	8.0	14.1	15.5

CENTRIFUGAL MIST COLLECTORS

STANDARD FEATURES & AVAILABLE OPTIONS

Collector Design	Std	Opt
Heavy-Gauge Steel Construction	X	
Three Filtration Stages	X	
TEFC Motor	X	
Drain Kit	X	
3-Phase, 50-60 Hz Motor	X	
1-Phase, 60 Hz Motor		X
Flexible Inlet Hose Kit		X
Pedestal- 6' x 6"		X
Explosion Proof Motor		X
Aluminum Drum Assembly		X
Vibrator Isolators		X
Inlet Adapter		X
Prefilter Trap		X
In-Cover Trap		X
In-Cover Impinger		X

Filters and Liners	Std	Opt
Throwaway Liner	X	
Primary Filter	X	
Secondary Filter	X	
Exhaust Grill Filter	X	
Sock Filter (In-Line Prefilter)		X
Carbon Filter		X
HEPA Filter (Fourth Stage)		X
Paint System		
Electrostatically applied powder coat TGIC polyester texture finish (2-mil dry film thickness) inside and out. Paint system passed a 350-hour salt-spray corrosion protection test	X	
Hostile Environment Coating		X
Custom Colors		X
Warranty		
10-Year Warranty	X	

Significantly improve the performance of your collector with genuine Donaldson Torit replacement filters and parts. [Browse our catalog at donaldson.com](https://www.donaldson.com/torit)



Donaldson Company, Inc.
Torit
P.O. Box 1299
Minneapolis, MN
55440-1299 U.S.A.

Tel 800-365-1331 (USA)
Tel 800-343-3639 (within Mexico)

donaldson.com
donaldson.com



Data Sheet Centrifugal Mist Collectors (08/11)

© 2003 Donaldson Co., Inc. All Rights Reserved. Information in the document is subject to change without notice. Donaldson Torit is a registered trademark of Donaldson Company, Inc. Contains Donaldson proprietary technology.